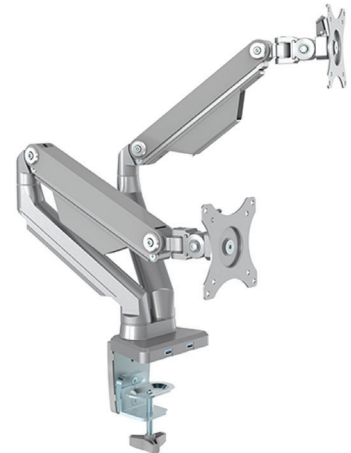
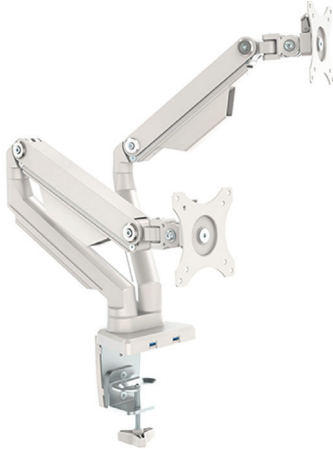
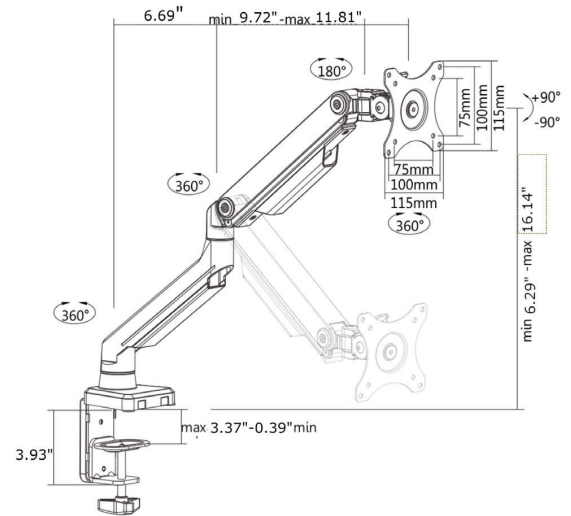


# EXPLORE

Monitor arm series

## Mechanical Spring Counterbalance Monitor Arm





## Explore Monitor Arms

**The best of form function and value best describes the Explore monitor arm series. Great features and design will elevate the look of your offices and the productivity of your employees.**

- Single and Dual arms suitable for 13" - 32" monitors
- 2 USB Ports in the base of arm with 36" long patch cord
- Monitor weights from 4lbs to 17.6lbs
- Full motion mechanical spring loaded arm.
- Wire management on both upper and lower arms
- -90° to +45° tilt, 360° portrait to landscape viewing,
- 75mm and 100mm VESA hole patterns, with quick disconnect plates included
- Clamp and grommet mount included
- Silver and White Finish



Part No.	Description
EXPLORE- 1 U	Single Arm, Light Duty 4-17.6 lbs monitor with 2 USB Ports
EXPLORE-2 U	Dual Arm, Light Duty, 4-17.6 lbs monitors with 2 USB Ports